

DUAL MAGAZINE LINE LOADER

The PCB's are extracted from the magazines onto the shuttle conveyor using puller mechanism. Shuttle conveyor moves sideways between magazines and downstream machine.



**STANDARD
SERIES**





**STANDARD
SERIES**

DUAL MAGAZINE LINE LOADER

STANDARD FEATURES

- > Magazines are manually placed on the platform and clamped in position.
- > Controlled by PLC.
- > Tailor made to the magazine of your choice.
- > Regulated pressure on the integrated pull cylinder.
- > Ball screw driven positioning of shuttle conveyor.
- > Conveyor width adjustment using hand wheel.
- > To dual magazine line loader werlight display for machine status.
- > Selectable pitch settings.
- > CE certified.

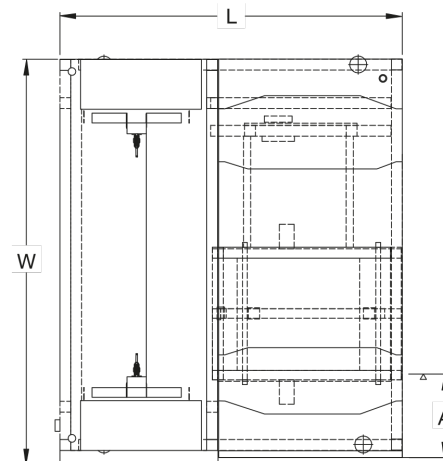
OPTIONS

- > Servo drive upgrade for shortened cycle time
- > Electrical conveyor width adjustment
- > Automatic conveyor width adjustment
- > Rotating pull cylinder to increase magazine capacity
- > Puller moves at ratio 1:2 to conveyor width
- > Hybrid magazine
- > Dual direction for same side loading/unloading
- > Touchscreen display
- > Alarm buzzer

Other options available on request

GENERAL MACHINE SPECIFICATION

Transfer height	950 mm ± 25 mm*
Colour	RAL 9002*
Flow direction	Left to right*
Fixed rail	Front*
Machine interface	SMEMA*
Conveyor concept	ESD belt*
Belt speed	14 m/min.
PCB edge support	3 mm
Components clearance	Top 30 mm, bottom 30 mm (depends on pitch)
Power supply	230 VAC/50 Hz/1 Ph
Power consumption	550 VA max.
Air supply	4-6 bar
Air consumption	10 ltr/min max.
PCB loading time	± 25 seconds (rear magazine)
Pitch control	1-4, 10 mm pitch 5 top magazine slots must remain empty
Max. total magazine weight	50 kg each * or specify



MACHINE SIZES	NTM 720LM	NTM 720LL	NTM 720LXL
Machine L x W x H (mm)	1080 x 1350 x 1750	1420 x 1680 x 1750	1420 x 1970 x 1750
Weight (Kg)	330	400	480
PCB Length (mm)	80 - 330	80 - 457	80 - 460*
PCB Width (mm)	75 - 250	70 - 407	70 - 460*
Max. magazine dimensions (mm)	370 x 320 x 570	535 x 530 x 570	535 x 580 x 570
Fixed rail to front (A) (mm)	380	380	380

*** or specify**

CLEVER AS EVER