

# MULTI MAGAZINE BUFFER

*The multi magazine buffer can be used as a mid-line loader or unloader, as a high capacity LIFO/FIFO buffer or as a reject buffer.*



STANDARD  
SERIES





# MULTI MAGAZINE BUFFER

## STANDARD FEATURES

- > Automatic magazine change-over
- > 5 operation modes available:  
Buffer mode (LIFO/FIFO) - Unload mode  
Load mode - Reject mode - By-pass mode
- > Dual function pusher conveyor.
- > Pressure limitation on pneumatic pusher.
- > Threshold signal to protect PCB's in upstream oven.
- > Controlled by PLC.
- > Towerlight display for machine status.
- > Selectable pitch settings.
- > CE certified.

## OPTIONS

- > By-pass conveyor above magazine platform
- > Electrical conveyor width adjustment
- > Automatic conveyor width adjustment
- > Width adjustable magazine conveyor(s)
- > Magazine conveyors located at front-side.
- > Touchscreen display
- > Alarm buzzer

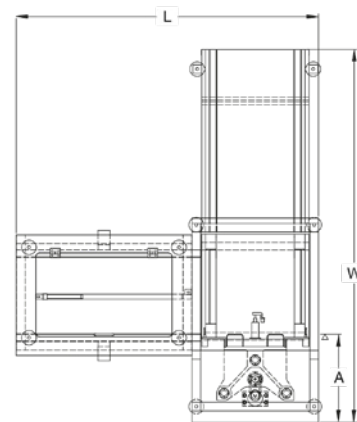
*Other options available on request*

## GENERAL MACHINE SPECIFICATION

Transfer height	950 mm ± 25 mm*
Colour	RAL 9002*
Flow direction	Left to right*
Fixed rail	Front*
Machine interface	SMEMA*
Conveyor concept	ESD belt
Belt speed	14 m/min.
PCB edge support	3 mm
Components clearance	Top 30 mm, bottom 30 mm (depends on pitch)
Power supply	230 VAC/50 Hz/1 Ph
Power consumption	800 VA max.
Air supply	4-6 bar
Air consumption	15 ltr/min max.
Machine cycle time	12-30 seconds max.
Pitch control	1-4, 10 mm pitch
Max. total magazine weight	50 kg each <i>* or specify</i>

### Total number of magazines

- 1 magazine on the lifter platform.
- 2 empty magazines on the upper magazine conveyor.
- 3 full magazines on the lower magazine conveyor.



MACHINE SIZES	NTM 620SM	NTM 620SL	NTM 620SXL
Machine L x W x H (mm)	1260 x 2145 x 1700	1560 x 2825 x 1700	1560 x 2825 x 1700
Weight (Kg)	230	280	300
PCB Length (mm)	80 - 330	80 - 457	80 - 460*
PCB Width (mm)	75 - 250	75 - 407	75 - 460*
Magazine dimensions (mm)	360 x 320 x 570	535 x 530 x 570	535 x 580 x 570
Fixed rail to front (A) (mm)	395	380	380

*\* or specify*