

TURN CONVEYOR L, I, T, X-TYPE

The turn conveyor is designed to change the flow direction of a PCB assembly line. The PCB is transferred onto the built-in ESD belt conveyor, which turns either clockwise or counter-clockwise.



STANDARD
SERIES





**STANDARD
SERIES**

TURN CONVEYOR L, I, T, X-TYPE

STANDARD FEATURES

- > Conveyor width adjustment using hand crank.
- > (NTM 91) Turning 90° clockwise or counter-clockwise.
- > (NTM 181) Turning 180° to change fixed rail position.
- > (NTM 271 and 361) various configurations possible.
- > By-pass mode available.
- > Controlled by PLC.
- > Unique lateral transfer system to handle small PCB's.
- > CE certified.

OPTIONS

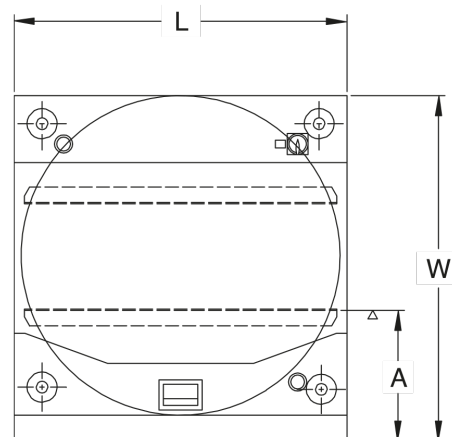
- > Good or bad board separation.
- > Electrical conveyor width adjustment.
- > Automatic conveyor width adjustment.
- > Cantilevered input- or output conveyor. (length 500 mm)
- > Touchscreen display.
- > Towerlight display.
- > Alarm buzzer.

Other options available on request

GENERAL MACHINE SPECIFICATION

Transfer height	950 mm ± 25 mm*
Colour	RAL 9002*
Flow direction	Left to right*
Fixed rail	Front*
Machine interface	SMEMA*
Conveyor concept	ESD belt
Belt speed	14 m/min.
PCB edge support	3 mm
Components clearance	Top 30 mm, bottom 30 mm
Power supply	230 VAC/50 Hz/1 Ph
Power consumption	200 VA max.
Air supply	4-6 bar
Air consumption	1.5 ltr/min max.
Machine cycle time	± 16 seconds

** or specify*



MACHINE SIZES	NTM91, 181, 271, 361M	NTM91, 181, 271, 361L	NTM91, 181, 271, 361XL
Machine L x W x H (mm)	795 x 795 x 1100	875 x 875 x 1100	975 x 975 x 1100
Weight (Kg)	160	170	200
PCB Length (mm)	80 - 457	80 - 457	80 - 460*
PCB Width (mm)	50 - 250	50 - 407	50 - 460*
Fixed rail to front (A) (mm)	272	234	234

** or specify*